



U. S. Fleet Forces Command

Authorized for Public Release.
Address inquiries to Public Affairs Office
U.S. Fleet Forces Command
1562 Mitscher Ave., Suite 250
Norfolk, Va. 23551-2487



U.S. Fleet Forces Mission Areas

Navy Readiness

- Generate ready Navy forces for assignment to Combatant Commands
 - **Organize, man, train, and equip** U.S. Atlantic Fleet and all Navy forces in collaboration with COMPACFLT
 - Execute **Fleet Response Plan (FRP)** using Fleet Training Continuum
 - **Navy Global Force Manager**
 - Integrate and consolidate matters concerning execution of operations, readiness, training in development of **Navy shore requirements**
 - Lead the **Fleet Readiness Enterprise**

Navy Warfighting Capability Requirements

- Articulate to **CNO** the integrated **Fleet** warfighting capabilities requirements as coordinated with all Navy Component Commanders and develop Fleet **Concepts** of Operations (CONOPS)

Joint Operational and Planning Support

- Provide operational planning and support to Combatant Commanders (e.g., COCOM to **JFCOM**, supporting to **NORTHCOM** defense and **STRATCOM**)

Navy Anti-Terrorism Force Protection (ATFP)

- Perform duties as CNO **Executive Agent** for ATFP
- Establish and implement ATFP **standards and policies** for Navy units

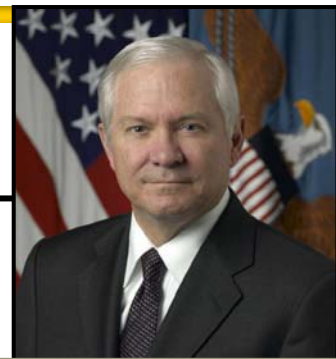


Chain of Command

Combatant Commands



★ ★ ★ ★ ★
U.S. STRATEGIC
COMMAND



SECRETARY OF
DEFENSE



★ ★ ★ ★ ★
JOINT CHIEFS



SECRETARY OF NAVY

Administrative Control



★ ★ ★ ★ ★
U.S. NORTHERN
COMMAND



★ ★ ★ ★ ★
COMMANDER, U.S. FLEET
FORCES COMMAND



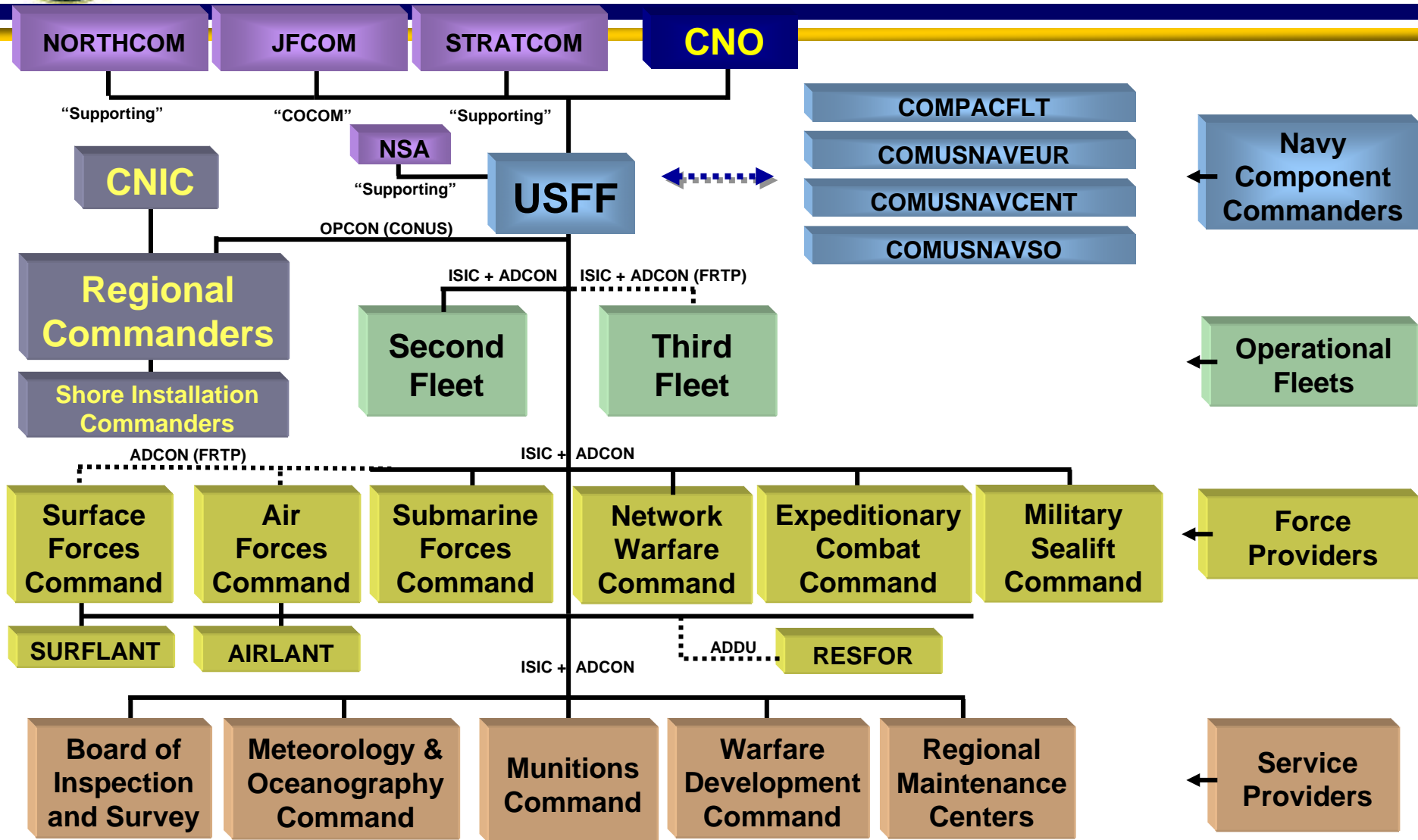
★ ★ ★ ★ ★
CHIEF OF NAVAL
OPERATIONS



★ ★ ★ ★ ★
U.S. JOINT FORCES
COMMAND



Command Relationships





Navy Operational Model

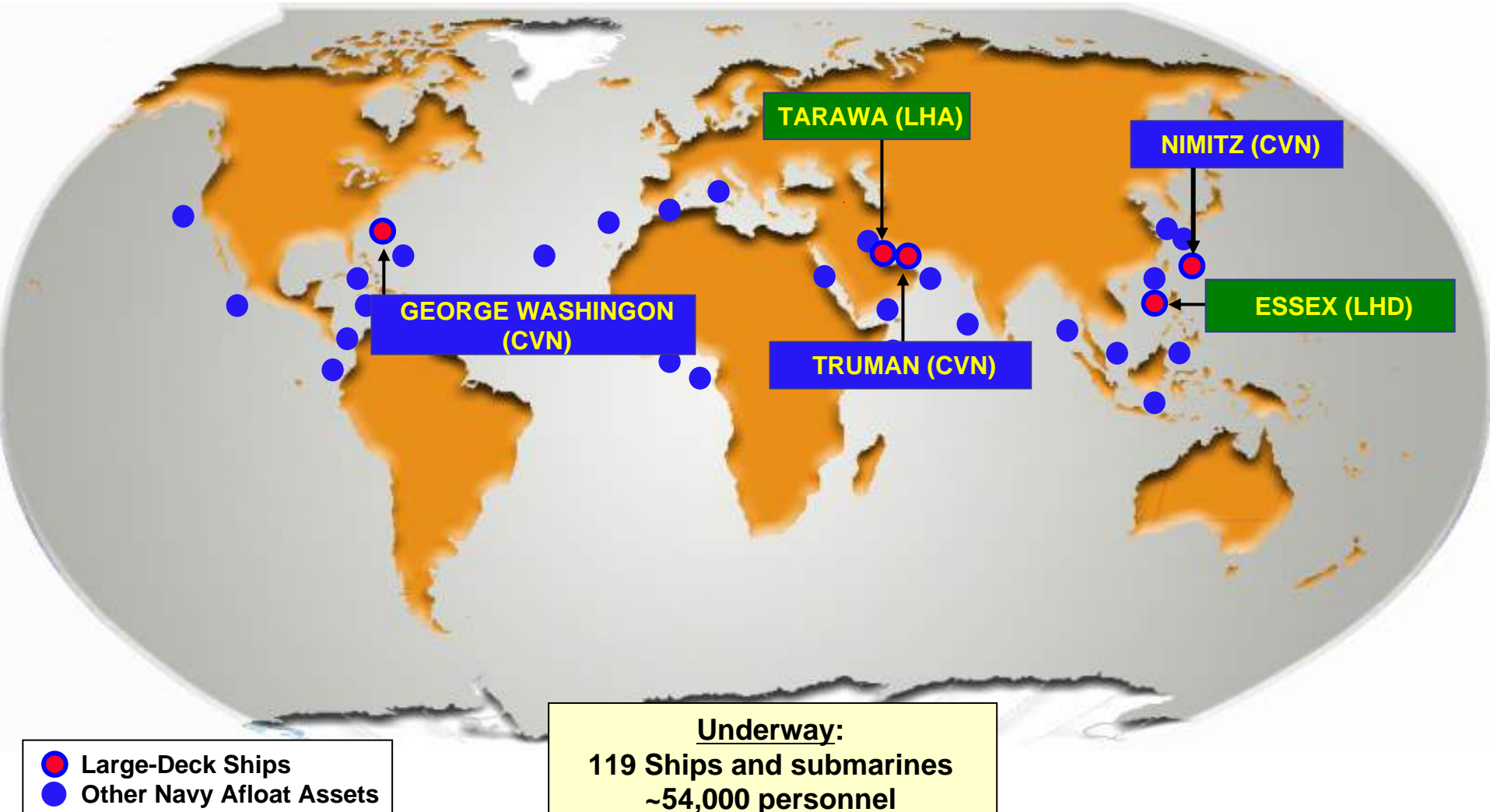
- **Forward, rotational forces responsive to Component Commander demand**
 - [Disaggregated](#) for regional maritime security
 - [Aggregated](#) for major operations
- **Rapid surge to meet emerging demands**
- **Dissuade/deter to reduce chances of major combat ops**
 - Deliver access and Maritime Domain Awareness
 - Shape through Navy Component Commanders
 - Power projection and strike capability readiness
- **Globally-netted Maritime Headquarters and Operations Centers**
 - Information Operations, reachback, and info sharing

Supports “A Cooperative Strategy for 21st Century Seapower”



United States Navy Today

February 20, 2008





Fleet Operational and Support Forces

Ships

Aircraft Carriers	11
Amphibious Ships	35
Surface Ships	100
Patrol Craft	8
Submarine	68



Aircraft

Tactical	1202
Helicopter	975
Patrol	194



Personnel (Active/Reserve/Civilian)	271,000+
Annual Operating Budget	\$50B





Major Strike Groups

Carrier Strike Group (CSG)

CV/CVN with multi-purpose airwing (60 aircraft)



5 CG/DDG



1 SSN



1 AOE (logistics)

Expeditionary Strike Group (ESG)



1 LHA/LHD (24 helos and STOVL aircraft)

+ 1 LPD



+ 1 LSD

(6 LCAC)



5 CG/DDG



1 SSN



1 MEU/SOC (Marine Expeditionary Unit/ Special Operations Capable)





United States Navy Today

Navy Augmentation Ashore

Iraq Augmentation:
~ 4,900

Afghanistan Augmentation:
~ 1,400



10,067 Navy augmentees
Active: 5,160
Reserve: 4,907

Approximately 60% of all Navy personnel in the Central Command Region are ashore



Supporting the Maritime Strategy

U.S. Navy's Core Capabilities



Forward Presence



Sea Control



Power Projection



Deterrence



Maritime Security



Humanitarian Assistance / Disaster Response

Additional Capabilities



Counter-terrorism



Integrated Air & Missile Defense



Expeditionary Warfare



Security Cooperation



Homeland Defense



Theater Security Cooperation

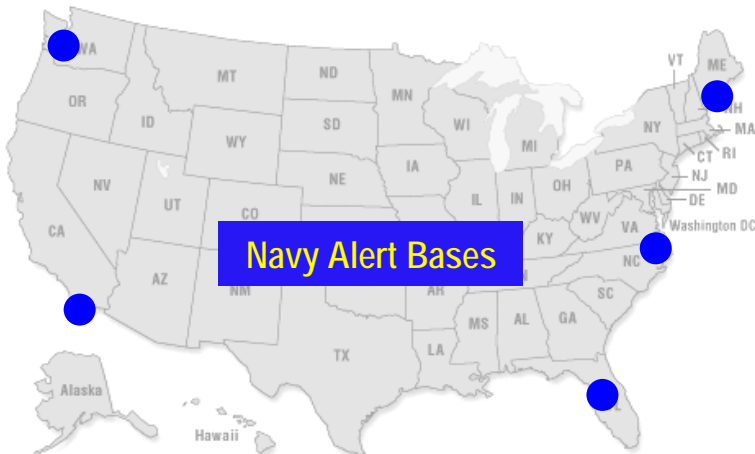


Defense Support of Civil Authorities



Maritime Homeland Defense

- **Commander, USFFC is the Joint Force Maritime Component Commander – North to:**
 - Position forces in preparation to deal with threats based on specific or abundant intelligence
 - Execute operations against specific maritime threat
- **Navy maintains alert forces**
 - Ready response for surveillance, interdiction
 - Duty Cruisers, Destroyers, aircraft



- **Defense Support of Civil Authorities**
 - Disaster response
 - Consequence management



Global Maritime Partnership Initiative ***(1,000-Ship Navy)***

Environment

- Global economy depends on ocean highways**
- Global commerce linked to maritime security**
- Regional crises have global impact**
- Key energy infrastructure moving offshore**
- Collective security depends on maritime security**



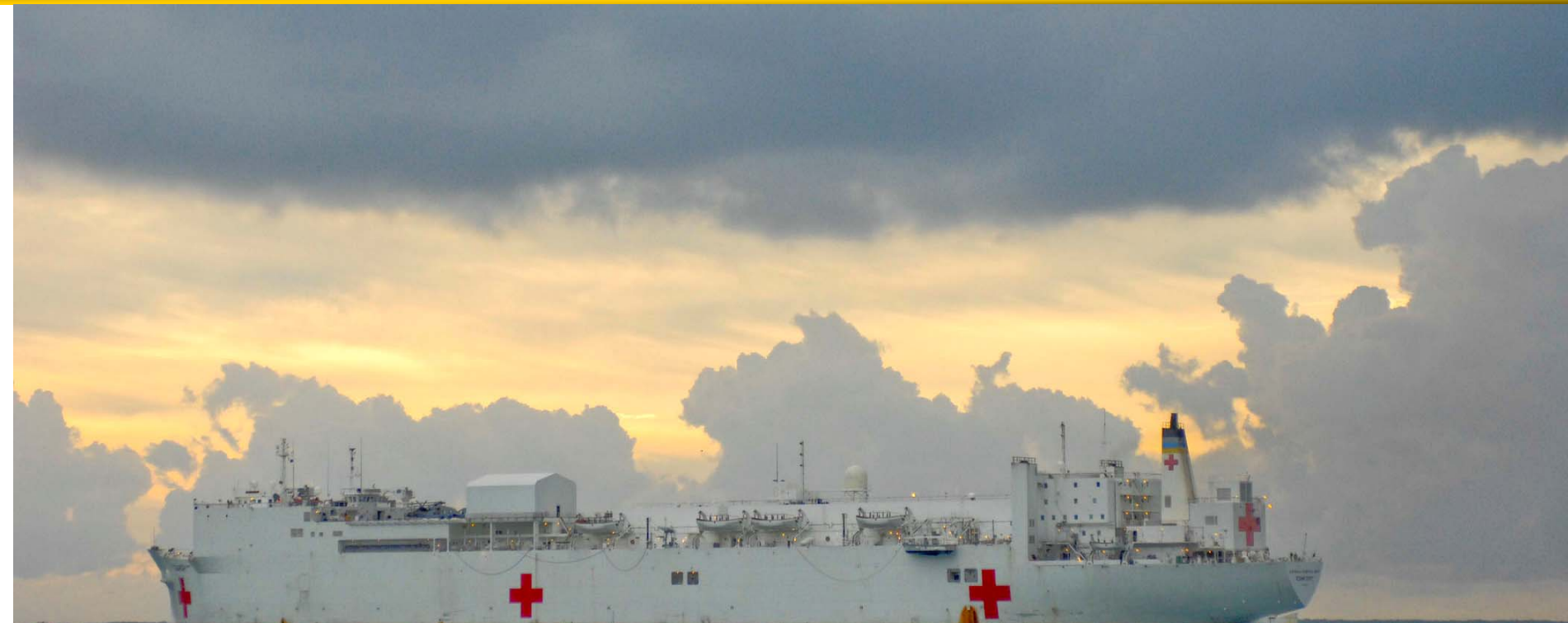
CTF-150 Change of Command

- 1,000-Ship Navy is a Global Maritime Network flying no single flag**
- Investing in partnerships, cooperation, coordination, communication**
- Securing growth of world economies, building trust**

Increase security so maritime commons may be safely used by all nations



Humanitarian Assistance





Fleet Response Plan

Get ready sooner

Stay ready longer



3-5 Months



3 Months



16-20 Months



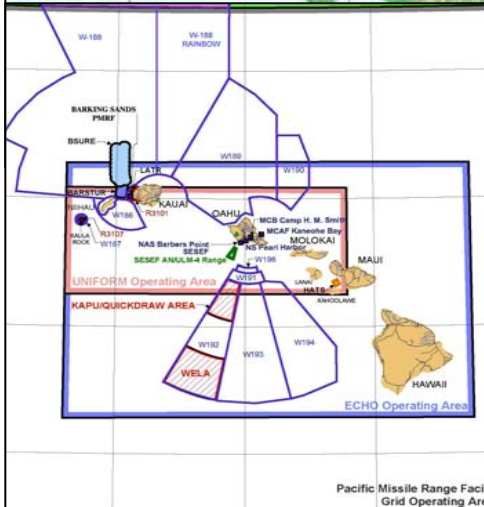
3-5 Months



Navy Training Ranges



Fleet Training Areas



Surface Warfare



Air Defense



Air Warfare



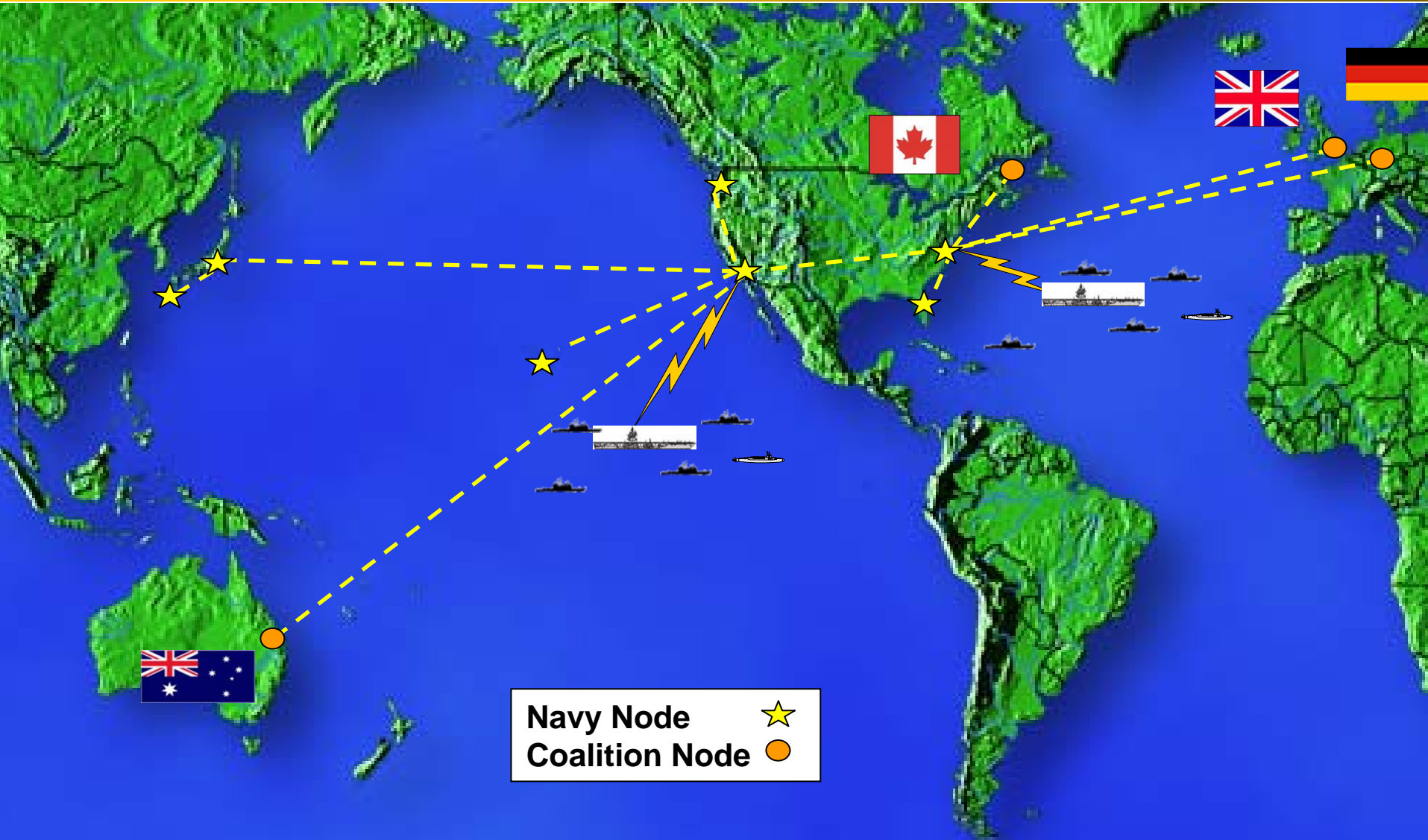
Visit Board Search & Seizure



Undersea Warfare



Synthetic Training





Executive Summary

- **U.S. Fleet Forces Command mission areas:**
 - Navy Readiness (Current)
 - Navy Warfighting Capability Requirements (Future)
 - Joint Operational and Planning Support
 - Navy Anti-Terrorism/Force Protection
- **Support “A Cooperative Strategy for 21st Century Seapower”**

Generate ready Navy Forces for assignment Globally



Discussion

